



| | | | | | | |
|----------|--|------|--|-----|-----------|--|
| PROJECT | | REF | | REV | ITEM CODE | |
| LOCATION | | DATE | | | PAGE | |

SANITARY WARE SPECIFICATION SHEET

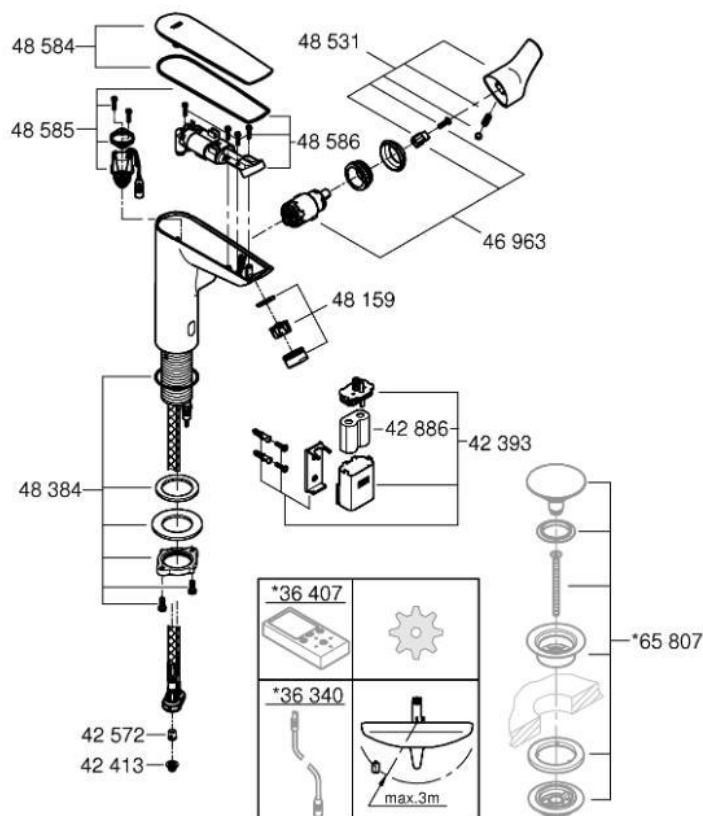
| | | |
|---|---|-----------------------|
| Item Descriptions | GROHE (Germany) "Eurosmart" Chrome plated single lever basin sensor mixer 1/2" M-Size; DC Supply with 6V lithium battery; 2-in-1 hybrid with touchless or manual operation; nominated flow rate 5 L/min in WELS Grade 1 ; Registration No. TM 22-0112 | Illustration/ Drawing |
| Dimensions | L158 x W101 x H158 mm | |
| Model | 23975003 | |
| Finish | Chrome Plated | |
| Manufacturer | GROHE Limited | |
| Source | Acme Sanitary Ware Co. Ltd Mr. Eric Wong/ Mr. Don Yuen | |
| Contact Tel/Fax | (852) 2388-7171 / (852) 2710-8012 | |
| E-mail | acme@acmesanitary.com.hk | |
| Website | www.acmesanitary.com.hk | |
| <p>Touchless operation is used for cold water and manual for mixed (cold & hot) water.</p> <ul style="list-style-type: none"> • monobloc installation • 2-in-1 hybrid with touchless or manual operation • manual lever operation having priority • metal lever • 28 mm ceramic cartridge with GROHE SilkMove • with temperature limiter • infra-red electronic • with infrared sensor for bi-directional communication for monitoring, configuration and servicing • 6V lithium battery, type CR-P2 • battery lifetime approx. 7 years (150 actuations a day) • non-return valve • dirt strainer • with integrated solenoid valve • external battery • multistage battery status display • 7 pre-set programs • auto flush • cleaning mode • additional functions and precise settings by remote control 36 407 • GROHE EcoJoy mousseur 5.7 l/min • GROHE Zero isolated inner water ways - lead and nickel free within the tap • rapid installation system • smooth body • flexible connection hoses • min. recommended pressure 1.0 bar • CE approved • professional edition | | |



| | | | | | | |
|----------|--|------|--|-----|-----------|--|
| PROJECT | | REF | | REV | ITEM CODE | |
| LOCATION | | DATE | | | PAGE | |

SANITARY WARE SPECIFICATION SHEET

GROHE EUROSMART



Fault / Cause / Remedy

| Fault | Cause | Remedy |
|-----------------------------|--|---|
| Water not flowing | <ul style="list-style-type: none"> Filter upstream of solenoid valve blocked Solenoid valve defective Plug-in connector without contact No voltage <ul style="list-style-type: none"> Battery discharged (indicator lamp lights up continuously) | <ul style="list-style-type: none"> Clean filter Replace solenoid valve Check plug-in connector electronics and solenoid valve Replace battery |
| Undesired water flow | <ul style="list-style-type: none"> Sensor system detection zone set too high for local conditions Automatic flushing activated Solenoid valve defective | <ul style="list-style-type: none"> Reduce range using remote control (special accessory, prod. no.: 36 407) / app Wait 1 - 10 minutes Replace solenoid valve |
| Flow rate too low | <ul style="list-style-type: none"> Mousseur dirty Filter upstream of solenoid valve dirty Filters in connection hose dirty Non-return valve defective | <ul style="list-style-type: none"> Clean or replace mousseur Clean filter Clean or replace filters Replace the non-return valve |

Note: https://www.youtube.com/watch?v=ohVr-RO1_mc

* All information of the above is for the reference only. No prior notice is made if any changes.

註冊號碼 (Registration No.): TM 22-0112



自願參與用水效益標籤計劃 - 水龍頭
Voluntary Water Efficiency Labelling Scheme - Water Taps




茲證明
This is to certify that

將下列水龍頭在本計劃內註冊：
has registered the following water tap under this scheme:

| | | |
|--------------------------------|---|---|
| 牌 子 / Brand | : | Grohe |
| 型 號 / Model | : | 23975XX3 + 407761040 |
| 種 類 / Type | : | Mixing |
| 原產地 / Country or Region Origin | : | Portugal (Mixer) Germany (Flow Controller) |

XX – denotes the code of colour

| | | | |
|---|---|---|--------------------------------|
| 在用水效益標籤上展示的標誌 <i>Symbolic Presentation on the Water Efficiency Label</i> | : |  | 滴水點 <i>Water droplet(s)</i> |
| 用水效益級別 <i>Water Efficiency Grade</i> | : | 1 | |
| 耗水量 <i>Water Consumption</i> | : | 5.0 | 公升/分鐘 <i>litres/minute</i> |

簽發日期：
Date of Issue: 2 June 2022



水務署
Water Supplies Department



水務署署長(林麗恒代行)
for Director of Water Supplies

本署檔號 : (4) in WSD 3321/2022 T/J(108/2022)
Our ref.
來函檔號 :
Your ref.

電話 :
Tel.
傳真 : 2824 0578
Fax.

1 April 2022



**Approval of "GROHE" Basin Mixer
(General Acceptance No. C20220246)**

Your letters ref. WRC/2733 and C-WSD/0903 dated 24 January 2022 and 14 March 2022 respectively refer.

Having considered the test report ref. 214549PC210386A issued on 16 February 2022 by Fugro Technical Services Limited, this Authority accepts that the fitting described below complies with, and its use when correctly installed does not contravene, the Waterworks Ordinance and Regulations.

Name of Manufacturer: Grohe AG
Country of Origin: Portugal
Brand: Grohe
Details of Fitting: 3/8" Single lever basin mixer with sensor
Model: 23975XX3
(where "XX" denote the code of colour)
Body Markings: 
Expiry Date: 5 January 2027

This Authority hereby permits the use of the above fitting in fresh water plumbing systems subject to full adherence to Waterworks installation requirements. In particular, you are required to draw your customers' attention to the following requirement-

"The cold water supply to the fitting shall be drawn from the same source that supplies the hot water apparatus so as to provide a balanced pressure and to obviate the risk of scalding in the event of a restriction or failure in the water supply."

"A stop cock or gate valve must be installed at the upstream of the fitting for manual isolation of water supply." AND

"The main voltage operated sensor valve should comply with the electricity safety regulation for applications in bathroom, toilet etc."

A condition of this acceptance is that the fitting to be installed shall be replicas of the sample as certified by the testing agent mentioned above and without modifications. This acceptance may be withdrawn at any time if the standard of the fitting installed fails to meet that of the approved sample or if the fitting is found to be unsuitable for use in fresh water plumbing systems.

This acceptance is only applicable to the main body of the fitting, unless otherwise specified.

For the use of the fitting in any project, the General Acceptance Number of this letter must be quoted as a means of identification of acceptance of the fitting by this Authority.

Should you have any enquiries, please contact our Engineer Ms Winnie LO at tel. no. 3583 4086.

Yours faithfully,



(YAU Hau Yin)
for Director of Water Supplies

Encl.

c.c. WSD 3321/1/82] - without catalogue
 ME/MC] - with soft copy only